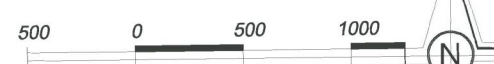
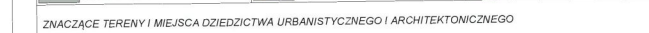
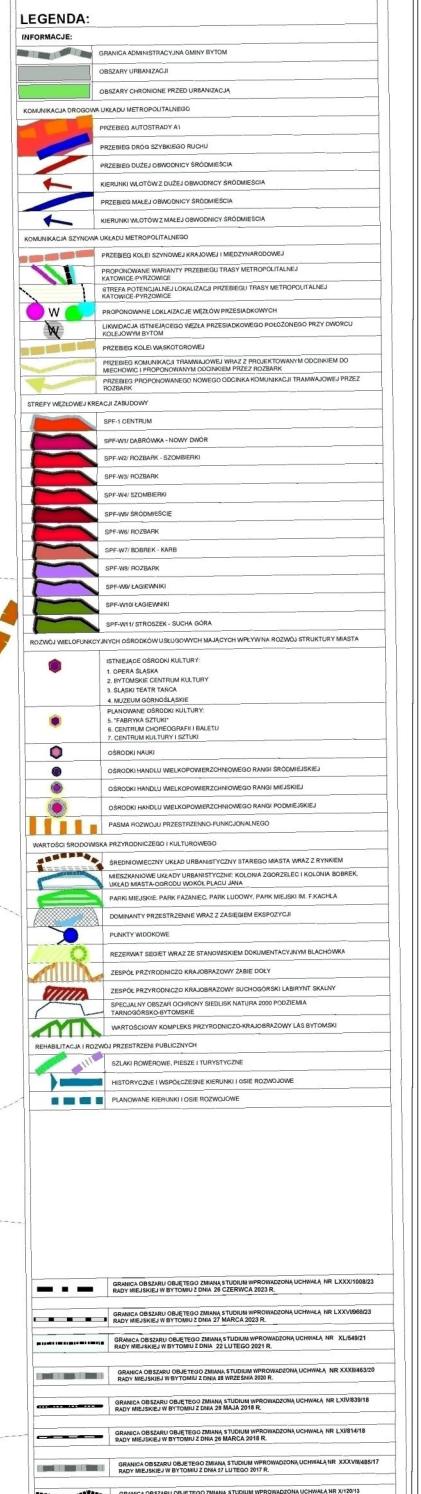
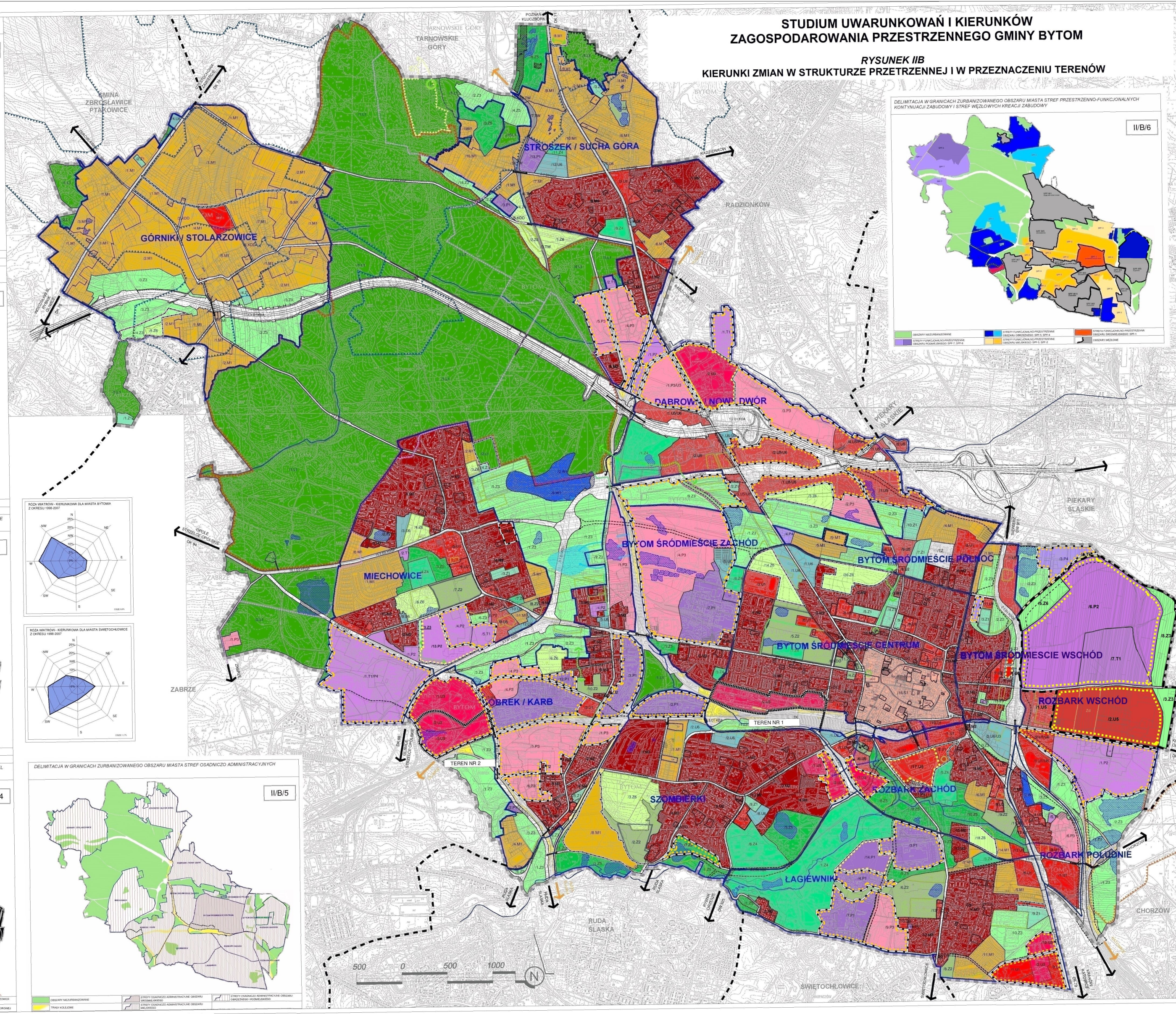
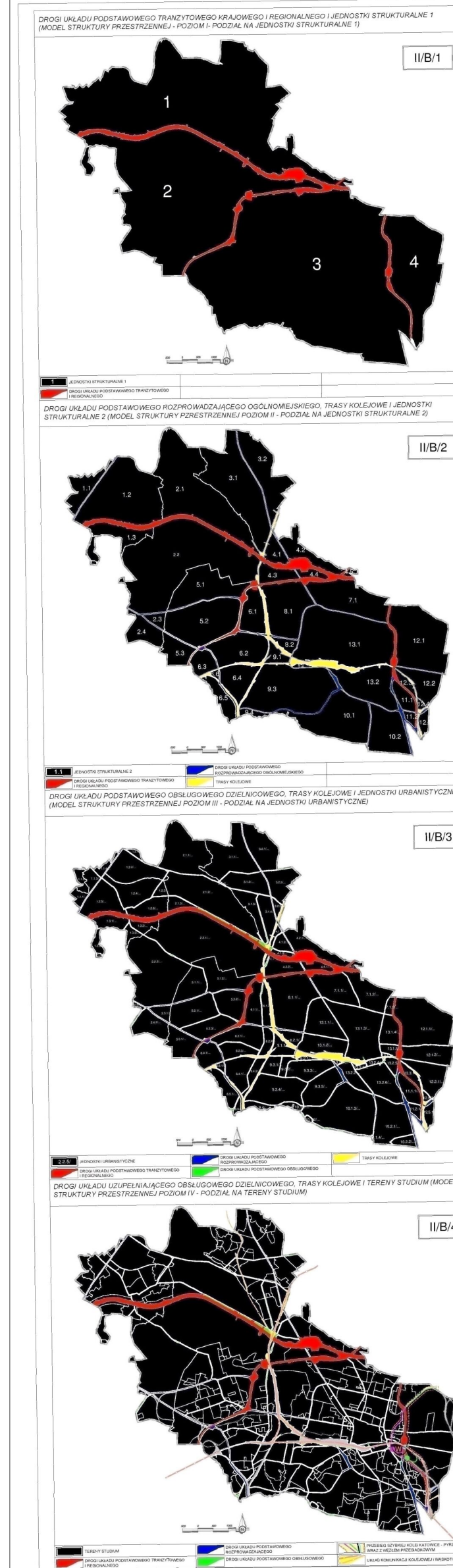


**RYSUNEK IIA**  
**STRATEGICZNE ZEWNĘTRZNE I WEWNĘTRZNE KIERUNKI ROZWOJU MIASTA BYTOMIA**



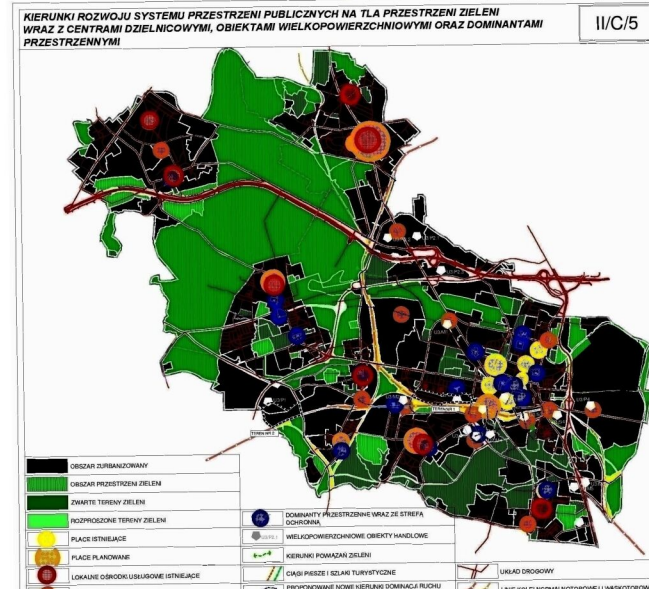
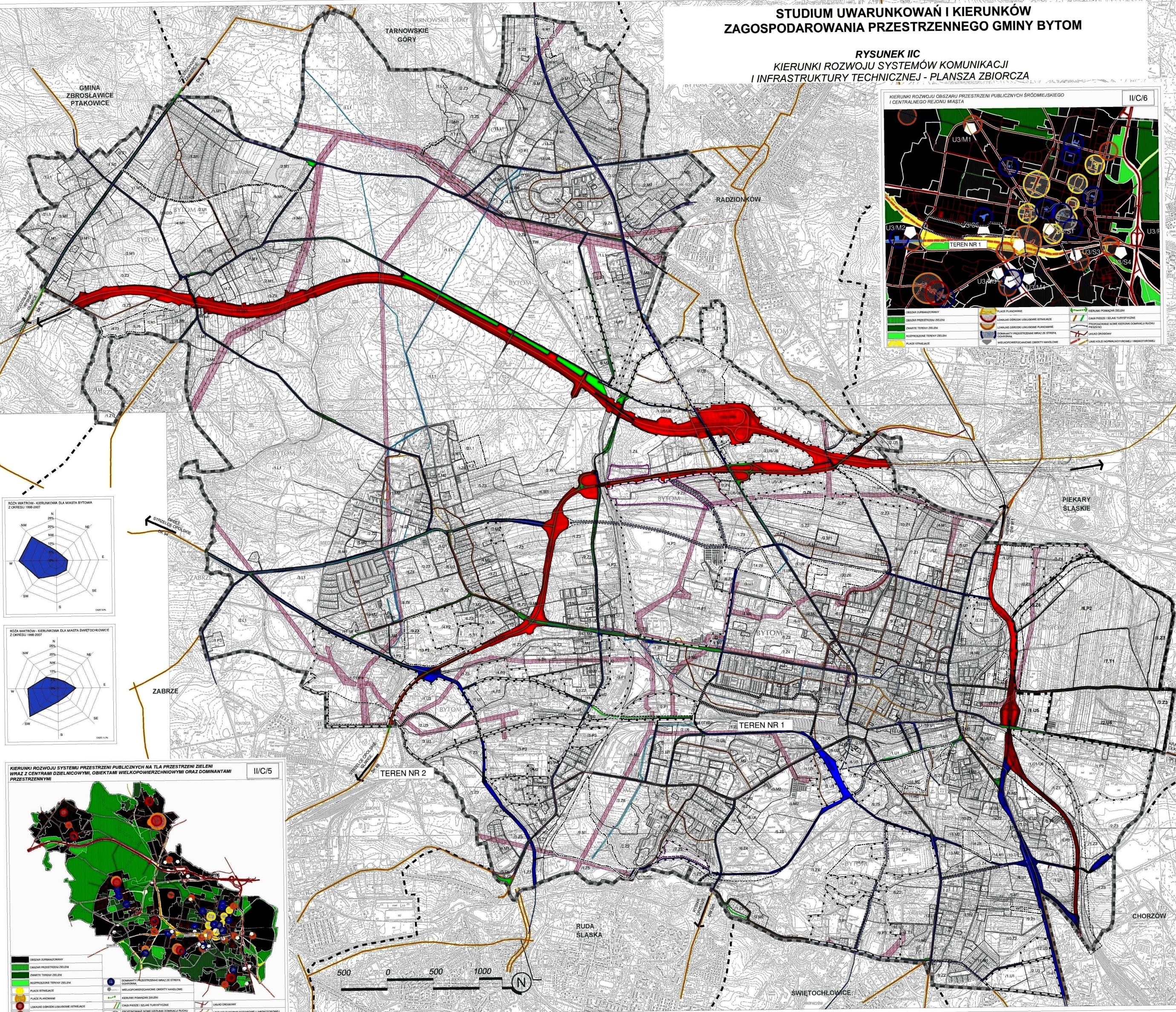
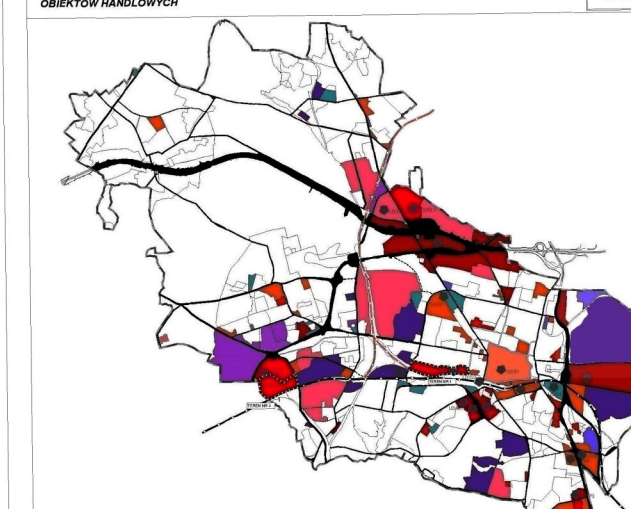
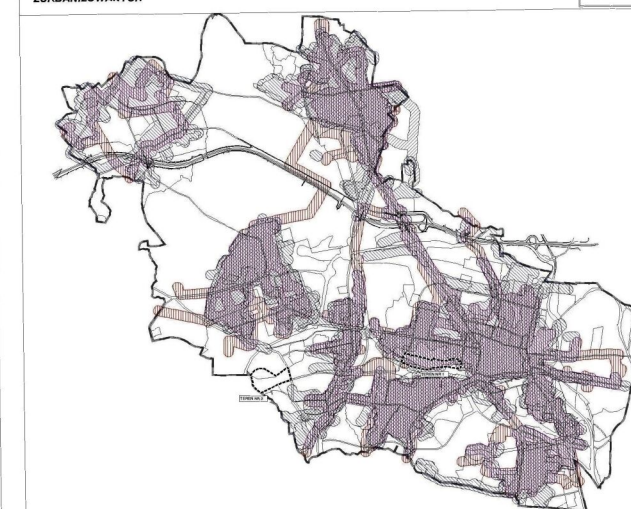
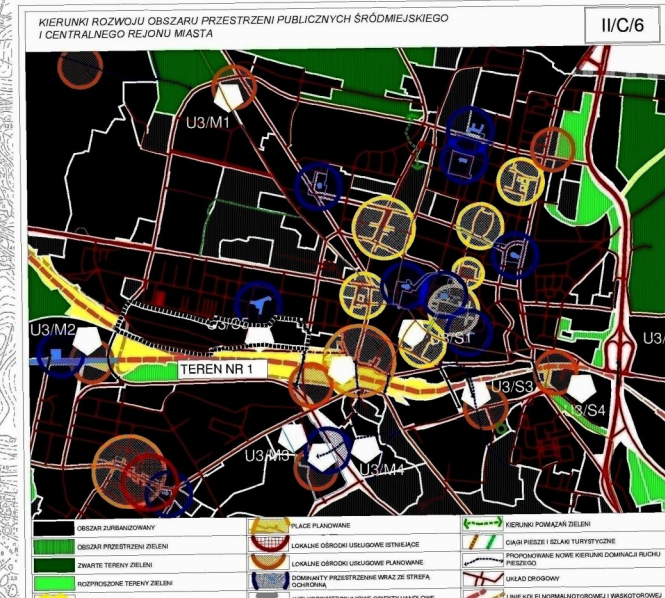




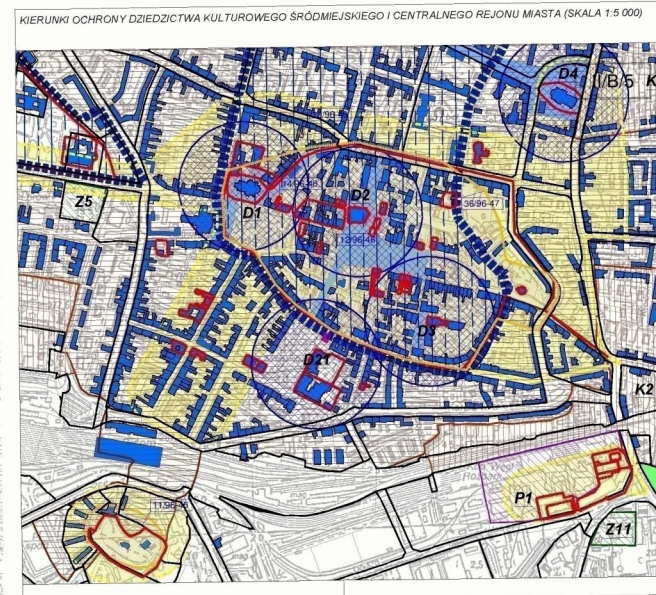




**RYSUNEK IIC**  
**KIERUNKI ROZWOJU SYSTEMÓW KOMUNIKACJI**  
**I INFRASTRUKTURY TECHNICZNEJ - PLANSZA ZBIORCZA**

[illegible]





ZAŁĄCZNIK NR 4.4  
DO UCHWAŁY RADY MIEJSKIEJ W BYTOMIU  
NR XVI/204/11  
Z DNIA 24 SIERPNIA 2011R.

[illegible]



